

Αξιοποίηση και προβολή του ψηφιακού πολιτιστικού αποθέματος:

Αλεξάνδρα Μπούνια

Τμήμα Πολιτισμικής Τεχνολογίας και Επικοινωνίας
Πανεπιστήμιο Αιγαίου, Μυτιλήνη

abounia@ct.aegean.gr

I. Εισαγωγή

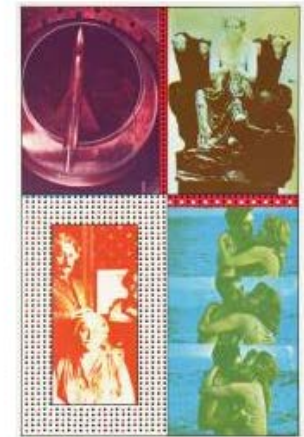
Η ψηφιοποίηση συλλογών
ιδρυμάτων μνήμης:

- νέες πρακτικές τεκμηρίωσης,
διαχείρισης, ανάλυσης
πολιτιστικού υλικού
- νέες μορφές συλλογής,
κατανόησης, ερμηνείας, διάθεσης
πληροφορίας

Personal Selection (You are not logged in)

List Works Light Box Login

4 Works



Light Box, Tate Online (προσωπικές επιλογές του χρήστη)

(Ford Madox Brown "King René's Honeymoon" 1864, Sir Eduardo Paolozzi "Moonstrips Empire News" 1967, Theodore Von Holst "The Fairy Lovers" 1840, David Jones, "The Garden Enclosed" 1924)

II. Η έννοια της αξιοποίησης του ΨΠΑ

- Βασικές έννοιες:
 - Πρόσβαση
 - Διασύνδεση/Δικτύωση
 - Ψηφιακός αλφαριθμητισμός
 - Κοινωνική δικτύωση (πολιτιστικοί οργανισμοί και social media)

[Planning your visit](#)
[What to see and do](#)
[Schools & courses](#)
[Astronomy](#)




Observations - news and views on astronomy from Sydney Observatory

- Observations
- Astronomy blog
- Monthly sky guides
- Sky guide transcripts
- Sky information
- Sky & Observatory news
- Citizen science projects
- Sydney City Skywatchers
- Sydney Outdoor Lighting Improvement Society (SOLIS)
- Historical letters
- Reports
- Videos
- Books
- Australasian sky guide – the book
- Transit of Venus – Sydney Obs



Βρείτε μας στο Facebook



Sydney Observatory: Αρέσει σε 6.104 άτομα.

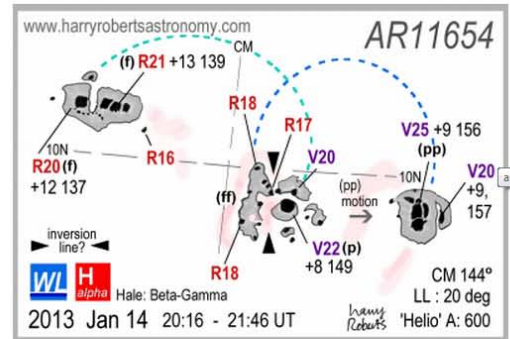


Προσθήκη κοινωνικής δικτύωσης Facebook

« Older

Harry is disappointed that giant sunspot group AR11654 turns out to be fizzer

Published by Nick Lomb on January 29, 2013 No Comments



The stretched out spot group AR11654 on the morning of 15 January 2013 (Australian time). Sketch and copyright Harry Roberts ©, all rights reserved

'Bigger' is not always 'better' where sunspots are concerned. The reasons some spots flare strongly and others don't is somewhat debatable: much depends on the magnetic complexity of the group and the amount of twist in the emerging fields. Hale went some way to explaining this with the Hale classification of magnetic complexity around 1920.

When AR11654 emerged on Jan 9 (UT) it showed such complexity; by the 10th it looked quite outlandish – with long thin umbrae wrapped around the irregular cluster of preceding spots (reviewed earlier) – surely we were in for 'fireworks'?

The signs of impending 'drama' were confined to the preceding spots. Fields in the distorted umbrae were logged at 2200G (Mt Wilson) while the following (f) spot remained a simple large round spot with R2100 polarity.

The newly emerging umbrae gave the impression of being 'squeezed' between opposing forces: they seemed to be new flux arising directly below the older (p) spots and being 'repelled' by them; it's useful here to call the new spots (pp) – ie they have 'preceding'

About

The 'Observations' blog is run by the staff of Sydney Observatory which is located at Observatory Hill, The Rocks, in Sydney, Australia.

This site is for discussion purposes only and does not represent the official views of Sydney Observatory. Any views expressed on this website are those of the individual post author only. Sydney Observatory accepts no liability for the content of this site.

Please direct any correspondence to web[at]pnh.gov.au.

SYDNEY OBSERVATORY
sydneyobs

sydneyobs Fantastic image from Herschel Space Telescope of Andromeda, absolutely incredible. (X-post from /r/pics) #space bit.ly/115dWGG about 1 hour ago · reply · retweet · favorite

extremecosmos Extreme Cosmos on the cover of March issue of @SkyandTelescope! Check your newsstand to read all about cosmic extremes twitpic.com/bz6tn0 about 1 hour ago · reply · retweet · favorite

sydneyobs New blog post: Harry is disappointed that about 1 hour ago · reply · retweet · favorite

Join the conversation

Brooklyn Museum

Community: bloggers@brooklynmuseum

ArtShare on Facebook!



Posted on November 8, 2007 by Shelley Bernstein

One of the things we are always striving to do is share our collection in new and unique ways. This can be seen in many areas of the physical building, from our cross-collection approach in *American Identities* to other installations like *Luce Visible Storage*. After reading a recent [article](#) in Wired, I started to realize why Facebook's application platform makes it different from its peers and it got me thinking about how we could utilize their API to bring greater visibility to our collection.

As it turns out, one of our programmers here, Mike Dillon, had been poking around Facebook on his own and was eager to develop on this platform. We had a brief conversation about it and the rest, I have to say, is all his doing. By the way, I'm posting on this because Mike is more the [punk-rock-i-don't-do-blogs](#) type, but have to give credit where credit is due 'cause [ArtShare](#) rocks!



What can you do with [ArtShare](#)? Well, you can select works from the Brooklyn Museum collection to display on your profile. But then, because social networking is about connecting and seeing what others contribute to the social fabric, anyone can also use [ArtShare](#) to upload their own work and share it with others. You can use [ArtShare](#) to select

bloggers@brooklynmuseum

Behind-the-scenes blogging at the Brooklyn Museum

Subscribe

Get email updates for bloggers@brooklynmuseum:

Subscribe



Recent Comments

[das optimal rechtsschutz](#): I'm just commenting to let you know what a exceptional discovery my cousin's girl...

[Prasida](#): Hi, The painting in the picture - "In the studio with Naomi Safran-Hon" is awesome. I...

[Siobhan Mc Quade](#): Is it possible to still get a copy of the exhibition catalogue for the Global Feminisms exhibition...

[Karen](#): I, for one, am very disappointed that the dance party portion of First Saturdays was scrapped. I actually...

[jj](#): It became Far too crowded but ironically it has also always been a terrible sound system. I think dance parties...

Recent Posts

TEMASIDER:
Kilder og litteratur
Bygdebøker
Historielag
Universitetsfaget
Faglige nettverk
Andre land
Slekthistorie
Kulturvern

LOCAL HISTORY
WORLD WIDE



Ansvarlig for
nettstedet: Norsk
lokalhistorisk institutt

Siden sist endret:
10.01.2013

Denne siden blir ikke lenger oppdatert

Historisk temasamling om barnevandringene på Agder

Søndag 3. oktober klokka 14 er det temasamling om barnevandringene på Agder. Samlinga holdes på Konsmo bedehus, og på programmet er kåserier av Paul Sveinall og Torbjørn Pogland. Det hele koster hundre kroner. Påmelding sendes per epost til info@audnedal.kommune.no.
[Oppdatert 26/02 - 10]

Mitnordiska arkeologidagar i Östersund

Årets tema er vikingtid i Midt-Norden med undertittelen "Människor i ett mångfacetterat Mitnorden åren 700-1200. Samhälle i förändring – vikingatid, internationalisering, religionsskifte och riksbildning".
Tid: 7.-9. oktober. Sted: Jamtli i Östersund. Påmelding innen 10. september.
[Oppdatert 26/02-10]

Agderseminaret 2010

Årets tema er popularisering av historisk stoff i ulike sammenhenger. Sted: Kristiansand. Tid: 15.-16. oktober 2010. Påmeldingsfrist er 25. september. Ansvarlig for arrangementet er rådet for Forskernettverk Agder, hvor Statsarkivet i Kristiansand er med.
[Publisert 10/8-10]

Riksantikvarens utviklingsnett

På seminaret 28. september vil Riksantikvaren se nærmere på erfaringene med å trekke de unge med i kulturminnearbeidet, hvordan de på ulike måter kan engasjeres i dette arbeidet, og hvilken betydning kulturminner kan ha for barn og unges oppvekstmiljø. Seminaret er gratis og finner sted på Sverresborg Trøndelag Folkemuseum.
> Ønsker du nærmere informasjon om seminaret: sent epost til tron.stranden@ra.no
> Påmelding innen 23. september via [Riksantikvarens nettsider](#)

Kulturvern ved bergverk

Bergverksseminaret 2010 finner sted i Modum 15.-17. september. Påmeldingsskjema finnes [her](#).
[Publisert 20/05-10]

Mot nord, ved verdens ytterkant

Honningsvågmuseet vil stille ut gamle kart på en utstilling av kart over nordområdene fra 1482 til begynnelsen av 1600-tallet. Utstillingsåpning 14. juni klokken 18.00 på Nordkappmuseet i Honningsvåg
[Publisert 27/05-10]

Nettutstilling om skolehistorie

Opplandsarkivet avd. Maihaugen har utarbeidet en nettutstilling om skolehistorie i lyd, bilder og tekst. Publikum oppfordres til å komme med tilbakemeldinger, korreksjoner, bilder og egne skoleminner.
[Publisert 11/12-09]

Abm-utviklings fotobevaringskonferanse

Møteplass, erfaringsutveksling, inspirasjon for alle som jobber med foto i arkiv, bibliotek og museum, og ellers alle interesserte. Lillehammer, 26.-27. april.
[Publisert 26/02-10]

Konferanse om medverknad i abm-sektoren

ABM-utvikling imiterer med dette til ein konferanse om medverknadsarbeid i abm-sektoren i Oslo 22.-23.mars 2010. Målet er å inspirera og motivera til at arkiva, biblioteka og musea i større grad involverer folk i arbeidet sitt og på den måten styrkjer samfunnsrolla si.
[Publisert 26/02-10]

Konferanse om kulturarv

20-21 oktober organiserer riksantikvaren konferanse om kulturarvets betydning. Internasjonalisering, teknologi og kulturelt mangfold er blant temaene..
[Publisert 02/10-09]

ABM-konferanse

Årets ABM-konferanse finner sted 2. og 3. november. Temaene for de to konferansedagene er «Slipp samlingene fri - slipp brukerne till» og «Framtidens museum - signaler, reaksjoner, konsekvenser».
[Publisert 07/09-09]

1743-seminar

Riksarkivet. Demokratiseringsprosjektet ved

Søk i lokalhistorie.no

levert av FreeFind

Søk

> Tidligere utgaver av lokalhistoriens gule side
> Nyhetsarkiv 2005

Objects Terms Sets



Welcome to the steve tagger!

You've found the steve tagger, a place where you can help museums describe their collections by applying keywords, or tags, to objects. To tag an object, you'll need to log in (you can do this using your Google or Yahoo or OpenID logins, or by creating an account). Once you've done that, just choose an object by clicking on the title in the thumbnail and begin tagging.

You can also use the tagger application to browse objects or tags, either randomly (the default setting) or by filtering on institution. Look around a bit, and feel free to let us know what you think by writing to [steve \[at\] steve \[dot\] museum](mailto:steve[at]steve[dot]museum).

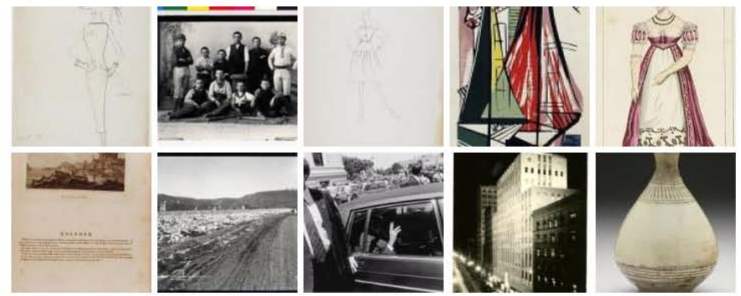
Finally: this space brings together objects from many of steve's project partners and showcases the functionality of the steve software. But this isn't the only place where you can see the steve software in action. We're currently working with a number of museums to help them implement steve tagging on their own websites (or in their galleries), since our goal is to make tagging easy to use for museums of all sizes and types. We'll be posting links here soon to other tagging opportunities that take advantage of the steve software.

[more](#)

21 Institutions
96881 Objects
550787 Terms
6176 Users

Filters
Institution:
All

Random Works



Top 100 Terms

abstract ancient beautiful beige bird **black** blackandwhite blue boat book bridge bronze
brown building ceramic chair child china circle city cloth cloud clouds color dark darkred design
dress exhibition face fashion figure flower flowers forest gold grass gray green grey hair hat
hill horse house japanese lady landscape leaf light lightgray line man maroon men metal
modern mountain nature nice nude old olive orange orangered painting paper pattern pencil
photograph pink plant portrait print red river road rock royalblue sculpture shadow sienna
silver sitting sketch sky slategray square stone tan tree trees wall water **white**
window woman women wood yellow

Weet u wat dit is?

Ons cultureel erfgoed bestaat uit een enorme hoeveelheid schilderijen, boeken, foto's, archiefstukken en archeologische overblijfselen. Echter een fractie hiervan wordt tentoongesteld. Ook is van veel objecten niet bekend wat het precies is of voorstelt. **En hier kunt u helpen.**

Hoe? Door het toevoegen van trefwoorden aan foto's. Met deze trefwoorden helpt u de collectie te verrijken, zodat andere mensen de foto's sneller kunnen vinden.

Ik wil trefwoorden toevoegen aan...

Collectie [Tandheelkunde 1](#) - Universiteitsmuseum Utrecht



Collectie [Tandheelkunde 2](#) - Universiteitsmuseum Utrecht



Collectie [Rariteitenkabinet](#) - Universiteitsmuseum Utrecht



Collectie [Interneringskampen](#) - Museon



Collectie Tekeningen uit Japanse interneringskampen Collectie [Kevers](#) - Naturalis - Museon



Kies een regio:

- [Baliwa](#)
- [Birma](#)
- [Buitenzorg](#)
- [Soerabaja](#)
- [Sumatra](#)
- [Tjimahi](#)

III. Συμπεράσματα

- Οι ψηφιακές βιβλιοθήκες & νέες τεχνολογίες μπορούν να υποστηρίξουν ένα **νέο ρόλο για τα ιδρύματα μνήμης**
 - κέντρο βάρους από αποθήκες σε κέντρα πληροφόρησης & άντλησης γνώσης & ψυχαγωγίας
 - **για** τις κοινότητες και **μαζί** με τις κοινότητες
- Για να επιτευχθεί αυτό:
 - Τήρηση κανόνων επαγγελματικής καλής πρακτικής στη δημιουργία και διατήρηση ΨΠΑ (και συνεχής ενημέρωση) &
 - Συνεργασία με χρήστες από πρώτα στάδια
- Για προγράμματα δημόσιας πρόσβασης, η **χρήση** και η **αξιοποίηση** τους είναι τόσο σημαντικές όσο η **δημιουργία** τους